



ARCHITEXTURAL™

Surface. Designed.





REFURB WITH FILM

Looking for an alternative refurbishment solution?

Self-adhesive films could be a simple and cost-effective alternative for your interior design projects. Create faux finishes by wrapping existing surfaces, saving landfill and avoiding the disruption of traditional refurbishments.

Looking for an installer?

We have a growing network of fully trained applicators who will be able to supply and install your projects with confidence. This elite group of installers, from fit out, sign and graphics companies, all share the same mission, to be one of the first to uncover exceptional ways to renovate building interiors and exteriors and to tap into the growing market of architectural finishes.

Architextural...

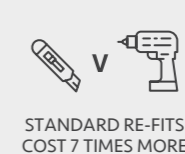
UK'S LARGEST STOCKIST OF ARCHITECTURAL FILM BRANDS.

1000+ patterns now on our shelves
More choice for your clients
No more long lead times

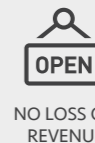
See our full range of films;
architextural.co.uk

 LX Hausys

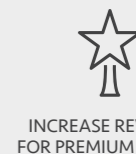
 ARCHITEXTURAL
Surface. Designed.



STANDARD RE-FITS
COST 7 TIMES MORE



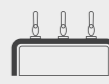
NO LOSS OF
REVENUE



INCREASE REVENUE
FOR PREMIUM ROOMS



QUICK INSTALL WITH
NO BUILDING WORK



NOT JUST FOR
FLAT SURFACES



1500 REALISTIC TEXTURES
AND PATTERNS



TRANSFORM ONE ITEM
OR TRANSFORM MANY



A SUSTAINABLE
SOLUTION



FIRE TESTED, MOISTURE
AND HEAT RESISTANT

THEY SAY THAT FORM
FOLLOWS FUNCTION.
**WE SAY FORM
PRESERVES FUNCTION.**



TRANSFORMING INTERIORS

With eco-friendly materials fast becoming rising stars in the world of interiors, there are multiple benefits of using architectural films and how they can refurbish existing surfaces. Gone are the days when wrapping was exclusive to vehicles; architectural films have opened up a wealth of design possibilities.



SUSTAINABLE SOLUTION

On average, it costs seven times more to rip out and replace interiors. Wrapping with architectural films is a novel way to upcycle existing fixtures and fittings, rather than send to landfill.





MINIMAL DISRUPTION

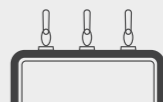
Architectural films can be applied in situ, with no noise, mess or waste. Little equipment and minimal prep is needed, meaning less downtime and inconvenience for businesses and they can stay open throughout.

The films are lightweight and conformable so they can be heated and stretched around many shapes, corners and contours without the need for edge banding.



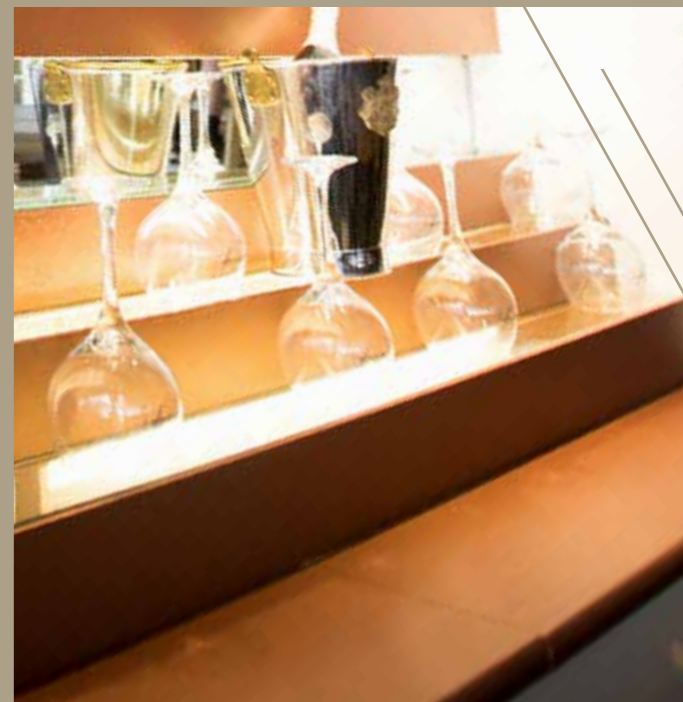
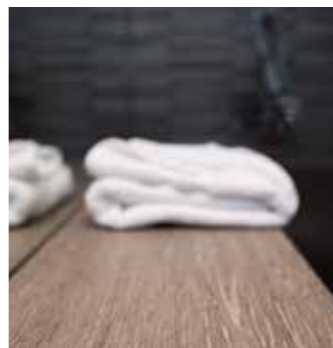
APPROVED

All finishes are fire tested and meet building regulations. And as the product is a PVC solution, it is fully water and heat resistant, as well as and hygienic, all of which are important in high-traffic venues such as gyms, bars and restaurants.





APPLICATION INSPIRATION





APPLICATION INSPIRATION

Here's a selection of recent transformations using self-adhesive architectural films. Wrapping existing surfaces is a cost-effective design solution for interior and exterior new building refurbishment projects, these vinyl films realistically recreate the visual effect of natural materials at a fraction of the cost.



Bar BEFORE



Bar AFTER



Shop counter BEFORE



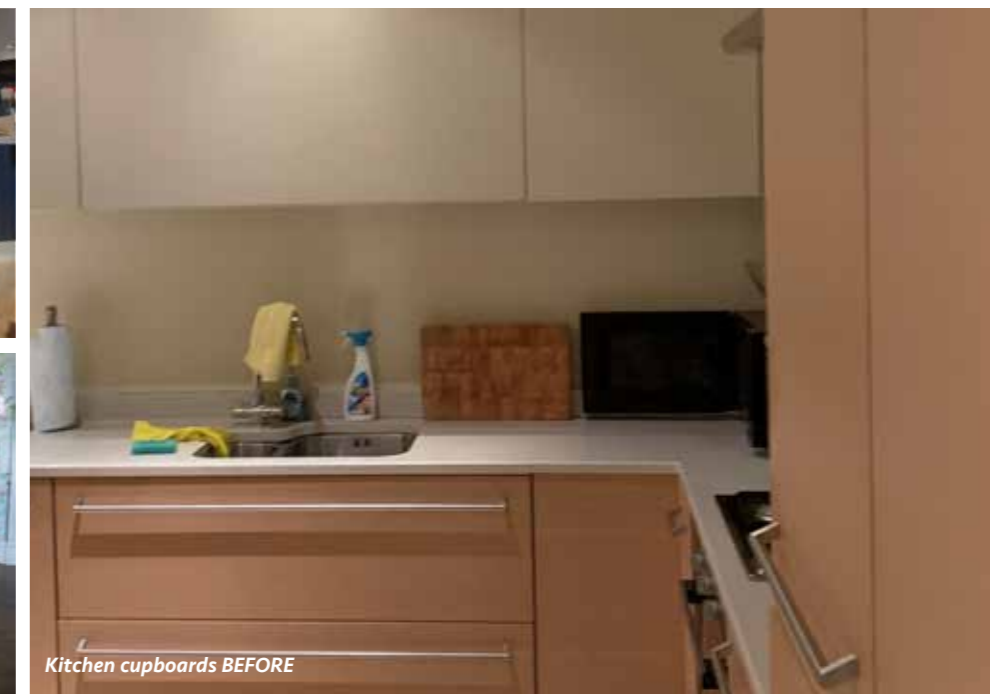
Shop counter AFTER



Reception desk BEFORE



Reception desk AFTER



Kitchen cupboards BEFORE



Kitchen cupboards AFTER



Bar BEFORE



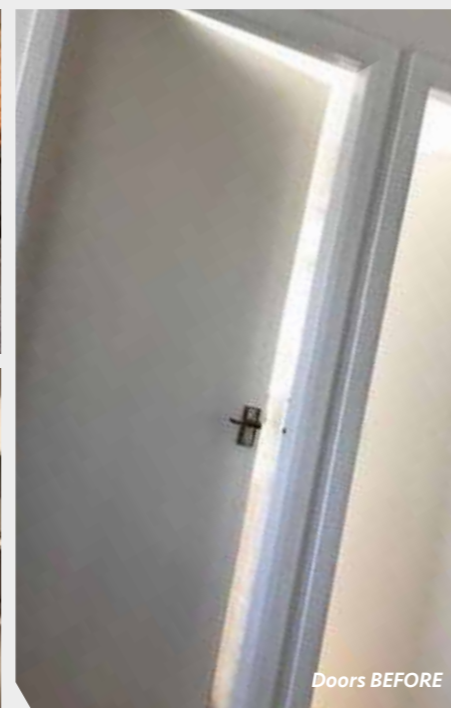
Bar AFTER



Display shelving BEFORE



Display shelving AFTER



Doors BEFORE



Doors AFTER



Lobby BEFORE



Lobby AFTER



OUR BRANDS

Architectural finishes are highly engineered, durable films, designed to look and feel like real-life materials. The films are often applied with heat, by skilled installers, to provide a realistic hardwearing finish. This allows you to create bespoke designs using less expensive materials, by wrapping them to look like authentic marble, wood or concrete.

With hundreds of patterns in stock, the possibilities really are unlimited, making in-vogue design more than achievable with architectural finishes. Mimicking the aesthetics of natural materials, architectural films offer unrivalled choice of on-trend patterns and an alternative method to upcycle existing substrates in an affordable, high-quality finish.



LX Hausys

LX Hausys BENIF Interior Film is the latest Architectural Film added to the Architextural portfolio. The range provides a budget-friendly solution for updating interiors, allowing dramatic makeovers that can be easily achieved without any need to break the bank. With the film, you can easily transform surfaces such as walls, doors, furniture, and fittings, with minimal disruption and reduced environmental impact than alternative options such as ripping out and replacing. Ideal for both residential and commercial refurbishment projects.

Leading stockists in the UK

The LX Hausys BENIF Interior range includes 475 unique patterns with a wide array of colours, textures, and finishes to choose from. Architextural hold the largest stock of LX Hausys BENIF Interior Films in the UK with nearly 200 of the most popular patterns all readily available for next-day delivery.

The finishes

Finishes including Solid Colours, Metal, Marble & Stone, Leather & Fabric, as well as a variety of the most desirable Wood Grains. Included in this are the Big Wood and Big Marble patterns, that feature larger repeats, ideal for those large-scale commercial projects covering surfaces such as walls or wide panels. The Embossed Premium Wood Range also offers a unique option for those seeking a more realistic finish, with a textured wood grain that accurately matches and mimics the pattern.





ARCHITECTURAL FINISHES

Architextural, are part of William Smith Group 1832 and we stock the largest range of architectural films in the UK. Everything you see on the following pages are held in stock and available by the metre.

Visit our website to order samples of any of the finishes
www.architextural.co.uk



With hundreds of finishes in stock, the possibilities really are unlimited, making in-vogue design more than achievable with architectural finishes.

Choose from our extensive collection of finishes including Wood, Colours, Metallic, Stone, Fabric and Leather.





WOOD FINISHES



Performance varies dependent upon individual pattern construction. Please cross reference the symbols below each finish for application considerations.



Suitable for external application



Not recommended for use on compound curves / stretching



Overlaps preferred, splice joints not recommended



WOOD FINISHES

BW001	BW005	BW007	BW014	BW008	BW006	BW009	BW002
BW013	BW015	BW003	CW511	CW537	CW527	CW604	CW556
CW626	CW453	CW79	CW519	CW605	CW407	CW582	CW150
CW513	CW466	CW152	CW624	DW633	DW639	DW647	DW645
DW636	DW634	DW638	DW649	DW467	FWES3		

LX Hausys



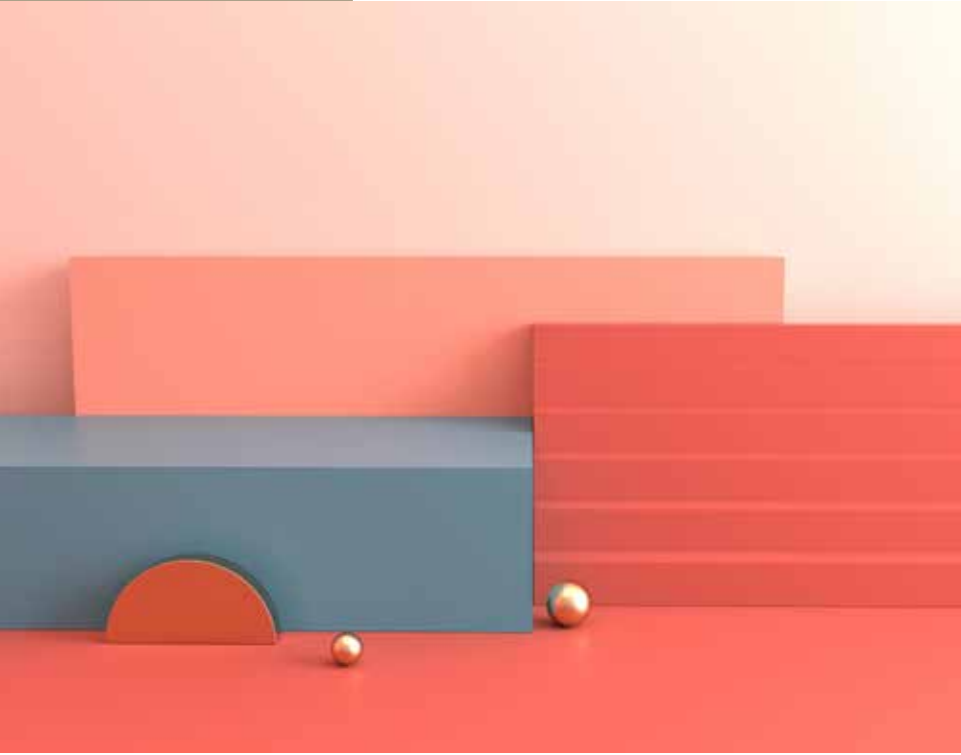
WOOD FINISHES



NW110	NW071	NW082	PW105	NW006	NW101	NW083	PW102
NW122	NW121	NW042	NW043	NW034	NW060	NW046	NW055
NW117	NW123	NW068	NW017	PW116	PW127	PW128	PW112
PW118	PW119	PW131	PW107	PW108	PW135	PW124	PW115
PW122	SW001	SW002	SW006	SW003			



COLOUR FINISHES



Performance varies dependent upon individual pattern construction. Please cross reference the symbols below each finish for application considerations.

- Suitable for external application
- Not recommended for use on compound curves / stretching
- Overlaps preferred, splice joints not recommended



COLOUR FINISHES



							
RGM05	RGM04	RGM03	RGM10	RGM02	RGM01	RGM06	RS116
							
RS174	RS104	RS107	RS105	RS140	RS40	RS35	RS176
							
RS49	RS57	RS163	RS56	RS170	RS68	RS76	RS55
							
RS91	RS162	RS45	RS151	RS121	RS142	RS134	RS52
							
RS136	RS135	RS103	RS175	RS22	RP56		

COLOUR FINISHES



							
RS130	RS86	RS118	RS119	RS181	RS58	RS125	RS165
							
RS120	RS127	RS177	RS89	RS61	RS27	RS128	RS51
							
RS166	RS123	RS87	RS31	RE03			
							
SM001	SM005	SM003	SM006	SM008	SM007		



METALLIC FINISHES



Performance varies dependent upon individual pattern construction. Please cross reference the symbols below each finish for application considerations.



Suitable for external application



Not recommended for use on compound curves / stretching



Overlaps preferred, splice joints not recommended



METALLIC FINISHES

LX Hausys

MS21	MS19	MS09	MS18	MS20	PME02	PM008	PM004
PM006	PM009	PM010	PM007	PM005	RP04	RP03	RP42
RP06	RP49	RP46	RP45	RP52	RP47	RP50	RP51





STONE FINISHES



Performance varies dependent upon individual pattern construction. Please cross reference the symbols below each finish for application considerations.



Suitable for external application



Not recommended for use on compound curves / stretching

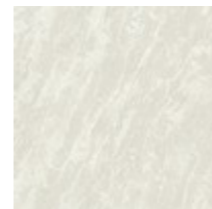


Overlaps preferred, splice joints not recommended

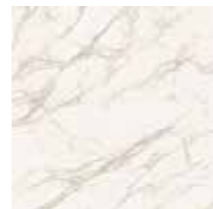


STONE FINISHES

LX Hausys



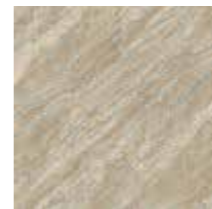
BM001



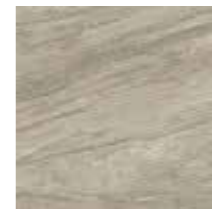
BM007



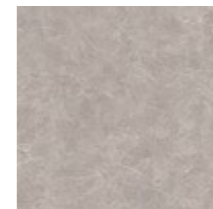
BM008



BM002



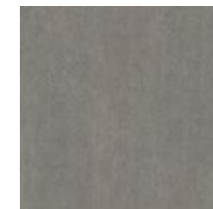
BM003



BM009



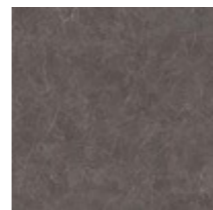
BM004



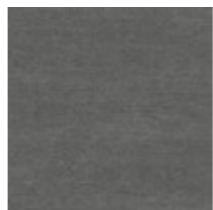
BM011



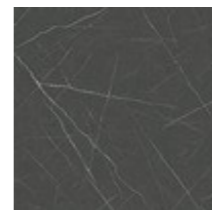
BM005



BM010



BM012



BM006



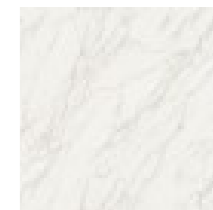
RM12



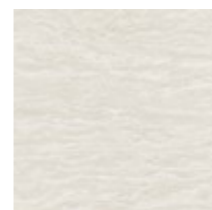
EL177



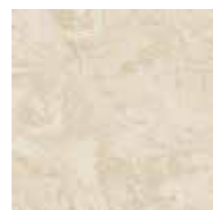
EL176



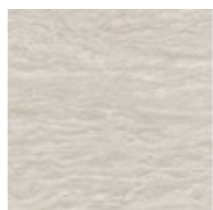
ML67



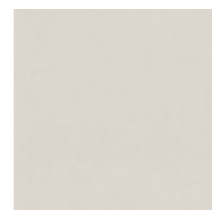
ML56



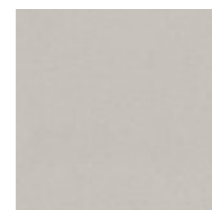
ML23



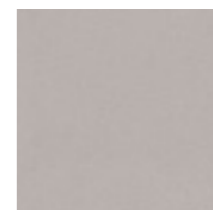
ML57



ML77



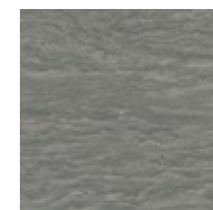
ML75



ML76



ML71



ML58



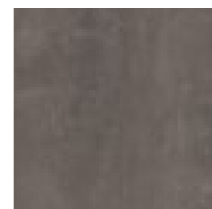
ML24



ML72



ML80



ML74





FABRIC FINISHES



Performance varies dependent upon individual pattern construction. Please cross reference the symbols below each finish for application considerations.



Suitable for external application



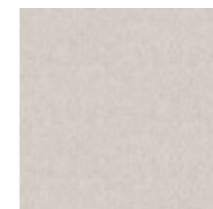
Not recommended for use on compound curves / stretching



Overlaps preferred, splice joints not recommended



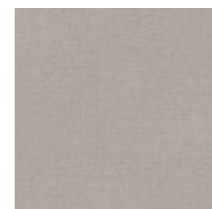
FABRIC FINISHES



ML49



ML47



ML45



ML48



SF009



SF003



SF002



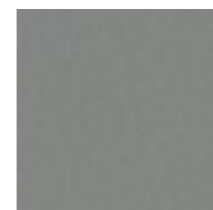
SF005



SF008



SF006



SF007



SF001



SF010



EL235



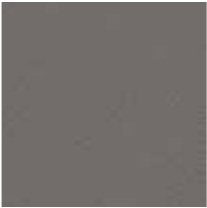
LEATHER FINISHES



LEATHER FINISHES



ML31



ML85

Performance varies dependent upon individual pattern construction. Please cross reference the symbols below each finish for application considerations.



Suitable for external application



Not recommended for use on compound curves / stretching



Overlaps preferred, splice joints not recommended





TECHNICAL SPECIFICATIONS

The use of architectural film has become more prevalent over the last few years as there has been a shift in attitude toward using sustainable solutions and methods within the construction sector.

Wrapping doors or case goods instead of ripping out and sending to landfill is a powerful statement for any stakeholders within a refurbishment scheme.

We recommend you discuss all technical considerations for your project with one of our skilled installation partners. Please contact us to organise a consultation or trial application with a member of our installation network



DURABILITY

Due to the number of finishes available, durability varies between patterns and brands. Cover Styl' finishes typically last 10 years, standard 3M DI-NOC has a durability of 5 years for exterior applications but up to 12 years for indoor use. The specialist exterior range however is expected to last 10 years+ ensuring protection against defects in fading, peeling, discoloration or loss of adhesion.

ABRASION RESISTANCE

Superior to many common wall surfaces such as paint/wallpaper, an equivalent level of HPL. There are additional specialist ranges also available for high traffic areas, or where greater protection is sought.

IMPACT RESISTANCE

Performance is superior to many common wall surfaces such as paint/wallpaper. However, film surfaces can be dented if sufficient force is applied. Impact resistance is highly dependent on the strength of the substrate material onto which it is applied. As it is a vinyl, it offers a degree of cushioning on impact, where harder substrates such as laminates may crack with the same impact. However, the beauty of architectural film, is that any damage over its lifetime can be repaired with an invisible patch, without having to remove or replace any expensive panels.

CLEANING

Architectural films are made from durable PVC, meaning they are wipeable and practical. They are also resistant to staining by common substances e.g. food or household cleaners. Full technical spec sheets are available on request.

FIRE CERTIFICATION

Architectural films meet all building and IMO regulations with fire certifications available across the range. Should you require specific information by patterns, we can put you in touch with our technical department. Fire test results vary by finish and application substrate, with most classified as class B or C with low dripping and emissions.





ARCHITEXTURAL™

Surface. Designed.



For more information visit
www.architextural.co.uk



01833 690305

info@architextural.co.uk

www.architextural.co.uk



William Smith Group 1832 Grove Works Queen Street Barnard Castle DL12 8JQ

PART OF **WILLIAM SMITH GROUP 1832**

